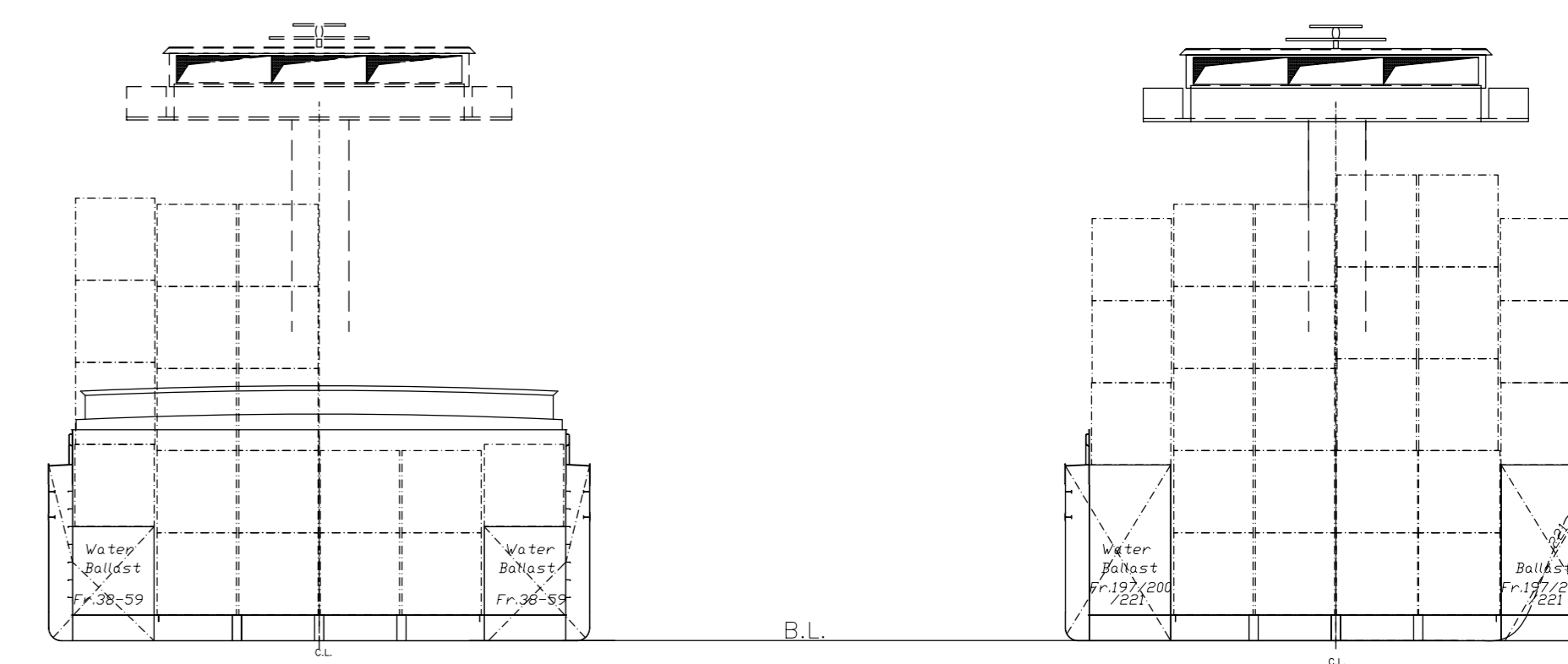
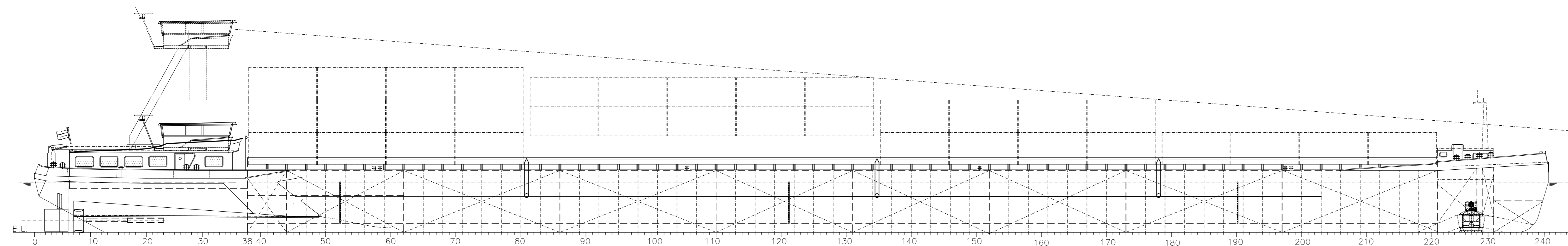
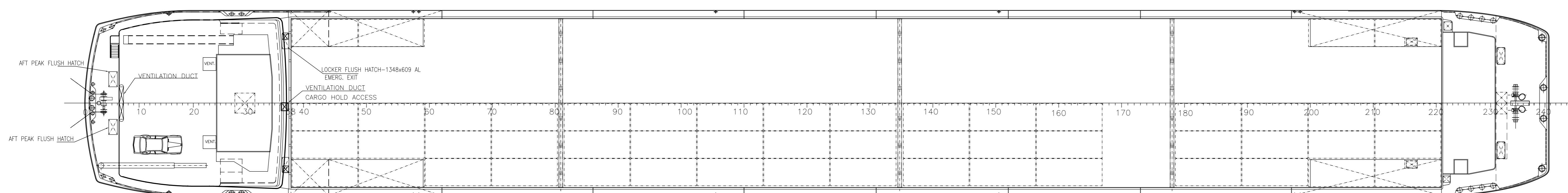


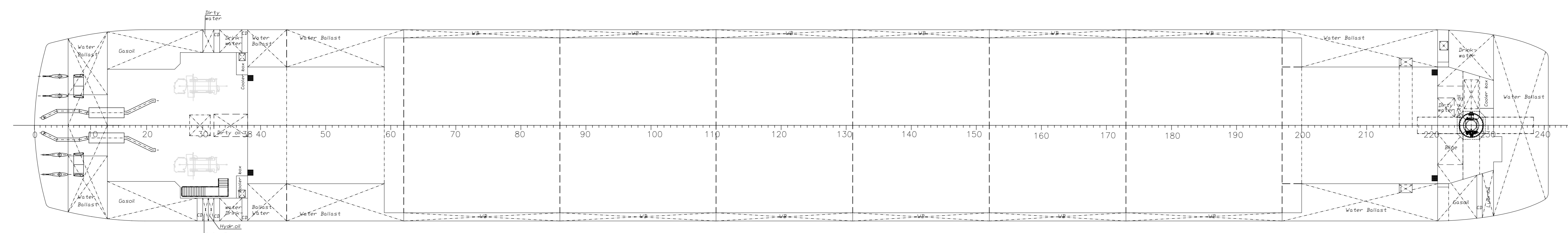
SIDE VIEW



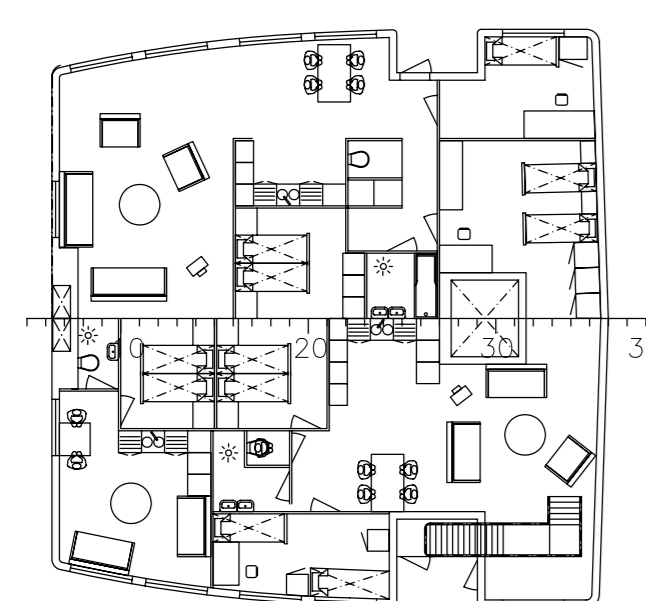
DECK VIEW



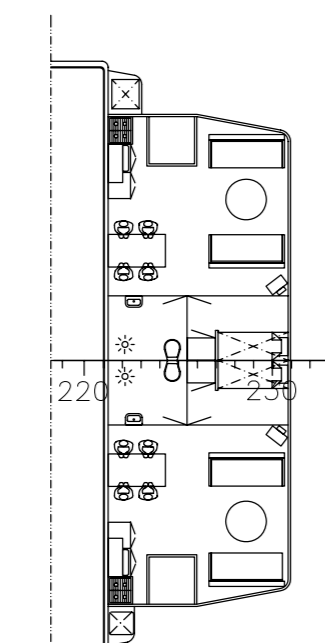
BOTTOM VIEW



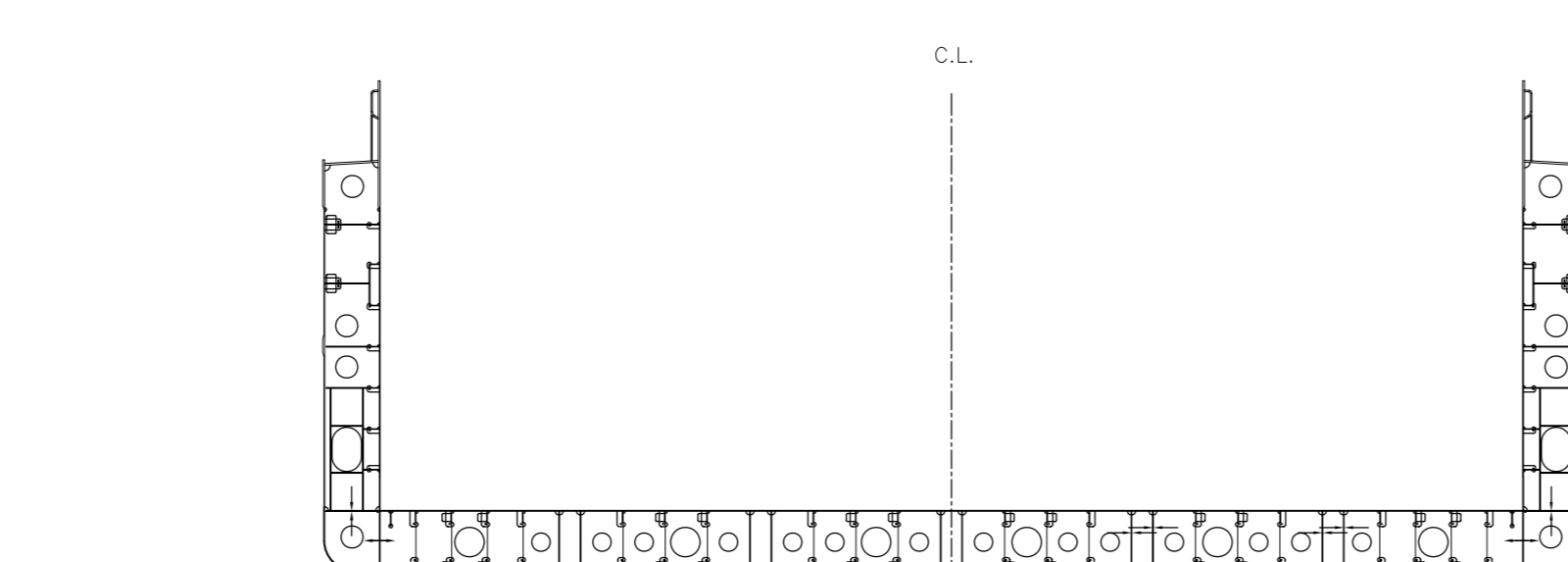
AFT SHIP ACCOMODATION



FORE SHIP ACCOMODATION



WEB FRAME
SPACING 1150
SCALE 1:100

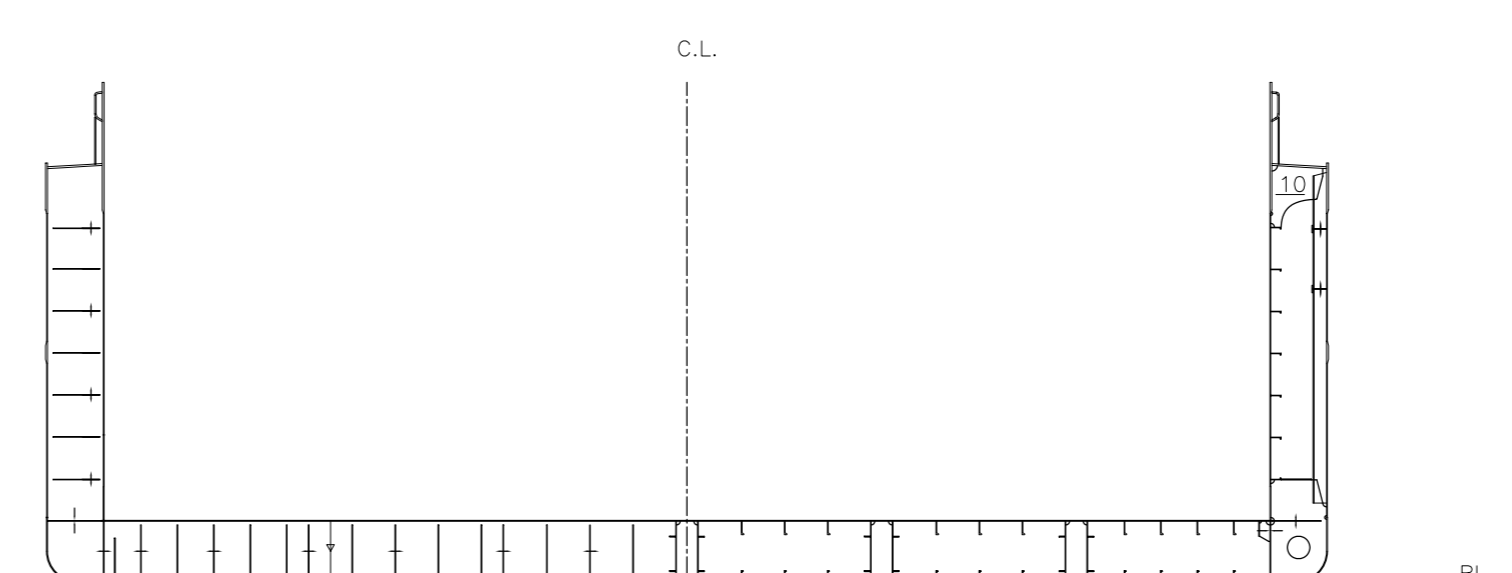


WATERTIGHT FRAME

SCALE 1:100

NORMAL FRAME

SPACING 550



MAIN PARTICULARS:

| | | |
|-------------------------------|----------------|--|
| Loa | 135.00 m | Container/Bulkcarrier |
| Bmid | 17.05 m | Ship construction to be in accordance with full ADNR regulations for transport of containers with dangerous goods. |
| Be | 17.10 m | |
| D to deck | 5.50 m | |
| D to coming top | 6.65 m | |
| T | 4.40 m | |
| Classification : | Bureau Veritas | Construction material Grade A. Coaming 25 mm Grade D. |
| Container cap. (5 layers) 20' | 498 TEU | |
| Anchor fore, HPP Pool HV (N) | 2X1710 kg | |
| Anchor aft, HPP Pool HV (N) | 1980 kg | |